

INF6522 – FIRST TIME SETUP NOTES

Thank you for purchasing a Mondopad INF6522. The INF6522 is a powerful Mondopad with a 65" full HD display and capacitive touch. The PC module is based on Intel's Core i7-6700T and powerful Intel HD Graphics 530.

This Windows 10 based system requires some additional steps to complete the Mondopad installation.

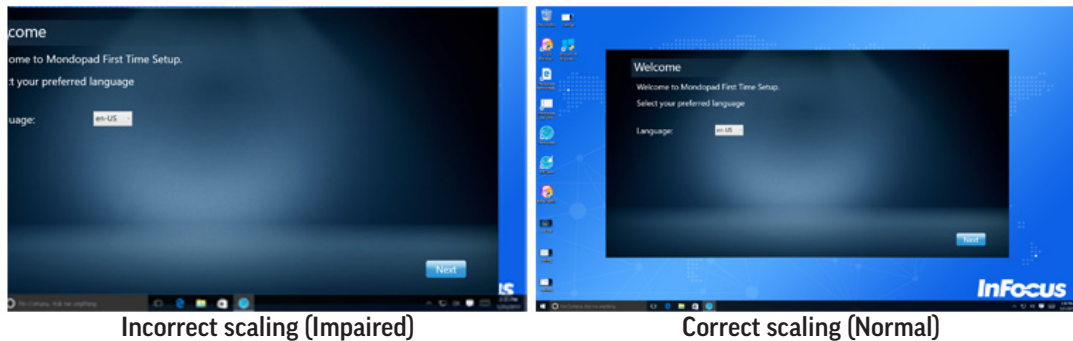
Windows Activation and Setup

Once you power on your Mondopad INF6522, the initial screens you'll see assist you in activating your Windows 10 license and setting up the initial account.

Follow the instructions provided by Microsoft to complete this portion of the Mondopad setup. You can refer to the Mondopad Quick Start Guide for details.

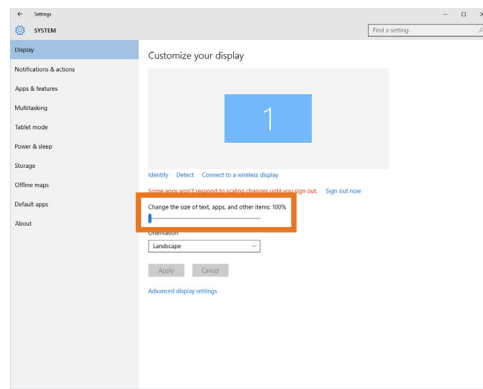
Mondopad Activation

Once the Windows activation and setup is complete, the Mondopad activation screens display. If the activation screens are impaired (only part of the screens are visible), follow the instructions below to correct the issue.

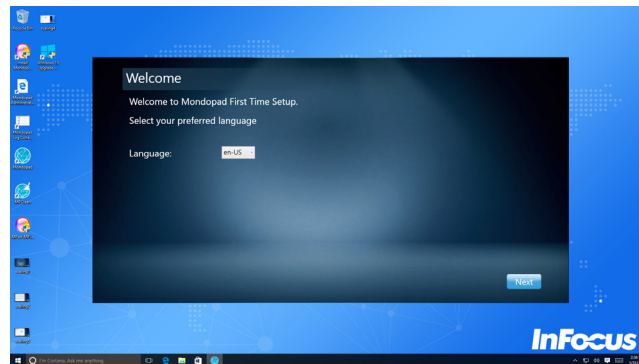


- 1) From the physical keyboard, press **Ctrl + Alt + Del** simultaneously.
- 2) Click **Start Task Manager**.
- 3) From the Applications tab, select **Mondopad Shell** and click **End Task**. This interrupts the Mondopad activation process and returns you to the Windows desktop.
- 4) Right-click the open desktop area.
- 5) Click **Display Settings**.

- 6) Slide the scaling factor to the left until the scaling factor reads 100%.



- 7) Close the **Settings** window.
- 8) Double-click the **Mondopad** icon on the desktop to restart the Mondopad software.
- 9) The Mondopad activation screens are now scaled properly. Complete the Mondopad Setup process as defined in the Mondopad Quick Start Guide.



Enjoy your Mondopad INF6522. Let us know if we can be of any help.

<http://www.infocus.com/support>