

InFocus

Technical Documentation

Applies to INF6500e Models

Introduction:

RS-232 is a communication protocol that can be used to send commands to and retrieve status information from the MondoPad and other RS-232 enabled devices. This is often used in conjunction with a control system capable of managing several other systems such as audio, lighting, and video switching systems. Simpler RS-232 implementations require nothing more than a personal computer, null modem serial cable, hex capable communication software and the MondoPad.

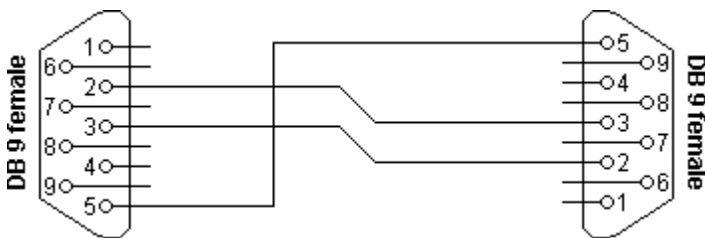
Configuration:

Setting	Value
Bits per second	9600 baud rate
Data Bits	8
Parity	None
Stop bits	1
Flow Control	None

Required Cable:

Null modem cable – female to female DB9 connector (9-pin serial)

Connector Pin-out:



Connector 1	Connector 2	Function
2	3	Transmit/Receive Data
3	2	Receive/Transmit Data
5	5	Ground

Minimum timing requirements:

- 300ms between commands
- 10ms character delay
- 20 second delay after a Power Off is initiated
- 1 second delay after a source change is initiated

Get structure and commands:

The commands and structure below are used to Read or “Get” data from a MondoPad over RS232.

Send Command Structure

Name	Header	Length	ID 1	ID 2	Command Type	Command 1	Command 2	CR
Byte order	1	2	3	4	5	6	7	8

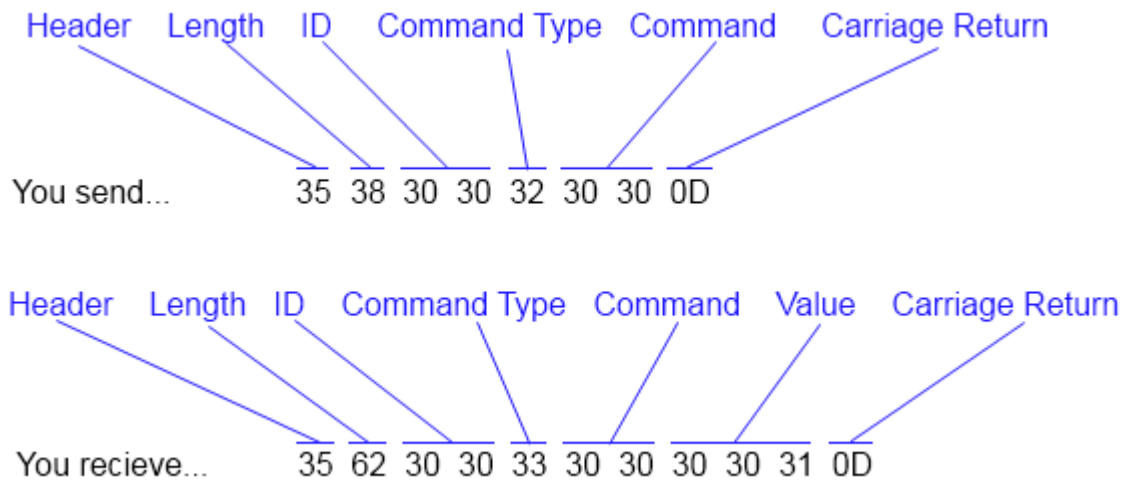
Valid Reply Structure

Name	Header	Length	ID 1	ID 2	Command Type	Command 1	Command 2	Value1	Value2	Value3	CR
Byte order	1	2	3	4	5	6	7	8	9	10	11

Not Valid Reply Structure

Name	Header	Length	ID 1	ID 2	Command Type	CR
Byte order	1	2	3	4	5	6

For example, say a MondoPad is powered on and you send the Get Power status command:



Since the Value is 001, this indicates the MondoPad is On. If the response value was 000, the MondoPad would be Off. If you use an invalid command for the 6th and 7th octets, you would get 35 36 30 30 33 36 0D

In the command table below, the actual Get command has a gray background and the possible valid responses have a white background. All the commands are listed in ASCII.

Responses with a value of “XXX” have a range of possibilities which are listed in the Valid Responses Column (example, Get Brightness has possible values of 000 – 100 (30 30 30 – 31 30 30))

****Some commands will only work on specific configurations***

Get Command ----- Valid Responses	ASCII Character											HEX											
	Header	Length	ID1	ID2	Command Type	Command 1	Command2	Value1	Value2	Value3	CR	Header	Length	ID1	ID2	Command Type	Command 1	Command 2	Value1	Value2	Value3	CR	
Get Power status	5	8	0	0	2	0	0				CR	35	38	30	30	32	30	30					0D
OFF	5	b	0	0	3	0	0	0	0	0	CR	35	62	30	30	33	30	30	30	30	30	30	0D
ON	5	b	0	0	3	0	0	0	0	1	CR	35	62	30	30	33	30	30	30	30	30	31	0D
Get Input select	5	8	0	0	2	0	1				CR	35	38	30	30	32	30	31					0D
HDMI1	5	b	0	0	3	0	1	0	0	0	CR	35	62	30	30	33	30	31	30	30	30	30	0D
HDMI2	5	b	0	0	3	0	1	0	0	1	CR	35	62	30	30	33	30	31	30	30	30	31	0D
HDMI3	5	b	0	0	3	0	1	0	0	2	CR	35	62	30	30	33	30	31	30	30	30	32	0D
HDMI4	5	b	0	0	3	0	1	0	0	4	CR	35	62	30	30	33	30	31	30	30	30	34	0D
HDMI5	5	b	0	0	3	0	1	0	0	5	CR	35	62	30	30	33	30	31	30	30	30	35	0D
Mondopad	5	b	0	0	3	0	1	0	0	9	CR	35	62	30	30	33	30	31	30	30	30	39	0D
VGA	5	b	0	0	3	0	1	0	0	3	CR	35	62	30	30	33	30	31	30	30	30	33	0D
YPbPr	5	b	0	0	3	0	1	0	0	6	CR	35	62	30	30	33	30	31	30	30	30	36	0D
Composite	5	b	0	0	3	0	1	0	0	8	CR	35	62	30	30	33	30	31	30	30	30	38	0D
Get Audio Input Select	5	8	0	0	2	0	2				CR	35	38	30	30	32	30	32					0D
Audio 1	5	b	0	0	3	0	2	0	0	0	CR	35	62	30	30	33	30	32	30	30	30	30	0D
Audio 2	5	b	0	0	3	0	2	0	0	1	CR	35	62	30	30	33	30	32	30	30	30	31	0D
HDMI 1	5	b	0	0	3	0	2	0	0	3	CR	35	62	30	30	33	30	32	30	30	30	33	0D
HDMI 2	5	b	0	0	3	0	2	0	0	4	CR	35	62	30	30	33	30	32	30	30	30	34	0D
HDMI 3	5	b	0	0	3	0	2	0	0	5	CR	35	62	30	30	33	30	32	30	30	30	35	0D
HDMI 4	5	b	0	0	3	0	2	0	0	7	CR	35	62	30	30	33	30	32	30	30	30	37	0D
HDMI 5	5	b	0	0	3	0	2	0	0	9	CR	35	62	30	30	33	30	32	30	30	30	39	0D
Mondopad	5	b	0	0	3	0	2	0	0	6	CR	35	62	30	30	33	30	32	30	30	30	36	0D
Get Keyboard Control	5	8	0	0	2	0	3				CR	35	38	30	30	32	30	33					0D
000 : Disable	5	b	0	0	3	0	3	0	0	0	CR	35	62	30	30	33	30	33	30	30	30	30	0D
001 : Enable	5	b	0	0	3	0	3	0	0	1	CR	35	62	30	30	33	30	33	30	30	30	31	0D
Get Brightness	5	8	0	0	2	1	0				CR	35	38	30	30	32	31	30					0D
000 ~ 100	5	b	0	0	3	1	0	X	X	X	CR	35	62	30	30	33	31	30	X	X	X		0D
Get Contrast	5	8	0	0	2	1	1				CR	35	38	30	30	32	31	31					0D
000 ~ 100	5	b	0	0	3	1	1	X	X	X	CR	35	62	30	30	33	31	31	X	X	X		0D
Get Sharpness	5	8	0	0	2	1	2				CR	35	38	30	30	32	31	32					0D
000 ~ 100	5	b	0	0	3	1	2	X	X	X	CR	35	62	30	30	33	31	32	X	X	X		0D
Get Color Temperature	5	8	0	0	4	0	0				CR	35	38	30	30	34	30	30					0D
000: Native	5	b	0	0	5	0	0	0	0	0	CR	35	62	30	30	35	30	30	30	30	30	30	0D
001: 6500K	5	b	0	0	5	0	0	0	0	1	CR	35	62	30	30	35	30	30	30	30	30	31	0D
002: 9300K	5	b	0	0	5	0	0	0	0	2	CR	35	62	30	30	35	30	30	30	30	30	32	0D
003: User	5	b	0	0	5	0	0	0	0	3	CR	35	62	30	30	35	30	30	30	30	30	33	0D
Get Color Control Red	5	8	0	0	4	0	1				CR	35	38	30	30	34	30	31					0D
000 ~ 100	5	b	0	0	5	0	1	X	X	X	CR	35	62	30	30	35	30	31	X	X	X		0D
Get Color Control Green	5	8	0	0	4	0	2				CR	35	38	30	30	34	30	32					0D
000 ~ 100	5	b	0	0	5	0	2	X	X	X	CR	35	62	30	30	35	30	32	X	X	X		0D
Get Color Control Blue	5	8	0	0	4	0	3				CR	35	38	30	30	34	30	33					0D
000 ~ 100	5	b	0	0	5	0	3	X	X	X	CR	35	62	30	30	35	30	33	X	X	X		0D

Get Picture Mode	5	8	0	0	4	0	4				CR	35	38	30	30	34	30	34			OD	
000: Standard	5	b	0	0	5	0	4	0	0	0	CR	35	62	30	30	35	30	34	30	30	30	OD
001: Highbright	5	b	0	0	5	0	4	0	0	1	CR	35	62	30	30	35	30	34	30	30	31	OD
002: Soft	5	b	0	0	5	0	4	0	0	2	CR	35	62	30	30	35	30	34	30	30	32	OD
Get Aspect Ratio	5	8	0	0	4	0	5				CR	35	38	30	30	34	30	35				OD
000: Wide	5	b	0	0	5	0	5	0	0	0	CR	35	62	30	30	35	30	35	30	30	30	OD
001: 4:3	5	b	0	0	5	0	5	0	0	1	CR	35	62	30	30	35	30	35	30	30	31	OD
Get Hposition	5	8	0	0	4	0	6				CR	35	38	30	30	34	30	36				OD
000 ~ 100	5	b	0	0	5	0	6	X	X	X	CR	35	62	30	30	35	30	36	X	X	X	OD
Get Vposition	5	8	0	0	4	0	7				CR	35	38	30	30	34	30	37				OD
000 ~ 100	5	b	0	0	5	0	7	X	X	X	CR	35	62	30	30	35	30	37	X	X	X	OD
Get Clock	5	8	0	0	4	0	8				CR	35	38	30	30	34	30	38				OD
000 ~ 100	5	b	0	0	5	0	8	X	X	X	CR	35	62	30	30	35	30	38	X	X	X	OD
Get Clock Phase	5	8	0	0	4	0	9				CR	35	38	30	30	34	30	39				OD
000 ~ 100	5	b	0	0	5	0	9	X	X	X	CR	35	62	30	30	35	30	39	X	X	X	OD
Get Screen Freeze	5	8	0	0	4	1	9				CR	35	38	30	30	34	31	39				OD
001: ON	5	b	0	0	5	1	9	0	0	1	CR	35	62	30	30	35	31	39	30	30	31	OD
000: OFF	5	b	0	0	5	1	9	0	0	0	CR	35	62	30	30	35	31	39	30	30	30	OD
Get Blank	5	8	0	0	5	0	0				CR	35	38	30	30	35	30	30				OD
001: ON	5	b	0	0	5	0	0	0	0	1	CR	35	62	30	30	35	30	30	30	30	31	OD
000: OFF	5	b	0	0	5	0	0	0	0	0	CR	35	62	30	30	35	30	30	30	30	30	OD
Get Dimming	5	8	0	0	5	0	1				CR	35	38	30	30	35	30	31				OD
000: Dimming 10%	5	b	0	0	5	0	1	0	1	0	CR	35	62	30	30	35	30	31	30	31	30	OD
001: Dimming 30%	5	b	0	0	5	0	1	0	3	0	CR	35	62	30	30	35	30	31	30	33	30	OD
002: Dimming 70%	5	b	0	0	5	0	1	0	7	0	CR	35	62	30	30	35	30	31	30	37	30	OD
003: Dimming 100%	5	b	0	0	5	0	1	1	0	0	CR	35	62	30	30	35	30	31	31	30	30	OD
Get Gamma Selection	5	8	0	0	2	1	c				CR	35	38	30	30	32	31	43				OD
000 : NATIVE	5	b	0	0	3	1	c	0	0	0	CR	35	62	30	30	33	31	43	30	30	30	OD
001 : 2.2	5	b	0	0	3	1	c	0	0	1	CR	35	62	30	30	33	31	43	30	30	31	OD
002 : 2.4	5	b	0	0	3	1	c	0	0	2	CR	35	62	30	30	33	31	43	30	30	32	OD
Get Volume	5	8	0	0	2	5	0				CR	35	38	30	30	32	35	30				OD
000 ~ 100	5	b	0	0	3	5	0	X	X	X	CR	35	62	30	30	33	35	30	X	X	X	OD
Get Speaker	5	8	0	0	2	5	4				CR	35	38	30	30	32	35	34				OD
000 : Internal	5	b	0	0	3	5	4	0	0	0	CR	35	62	30	30	33	35	34	30	30	30	OD
001 : External	5	b	0	0	3	5	4	0	0	1	CR	35	62	30	30	33	35	34	30	30	31	OD
Get Mute	5	8	0	0	2	5	5				CR	35	38	30	30	32	35	35				OD
000: OFF	5	b	0	0	3	5	5	0	0	0	CR	35	62	30	30	33	35	35	30	30	30	OD
001: ON (mute)	5	b	0	0	3	5	5	0	0	1	CR	35	62	30	30	33	35	35	30	30	31	OD
Get Language	5	8	0	0	4	1	0				CR	35	38	30	30	34	31	30				OD
000: English	5	b	0	0	5	1	0	0	0	0	CR	35	62	30	30	35	31	30	30	30	30	OD
001: Chinese	5	b	0	0	5	1	0	0	0	1	CR	35	62	30	30	35	31	30	30	30	31	OD
Get USB Hub	5	8	0	0	4	1	8				CR	35	38	30	30	34	31					OD
000:Auto	5	b	0	0	5	1	8	0	0	0	CR	35	62	30	30	35	31	38	30	30	30	OD
001:Mondopad	5	b	0	0	5	1	8	0	0	1	CR	35	62	30	30	35	31	38	30	30	31	OD
002:External	5	b	0	0	5	1	8	0	0	2	CR	35	62	30	30	35	31	38	30	30	32	OD
Get OSD turn off	5	8	0	0	4	1	1				CR	35	38	30	30	34	31	31				OD
000 ~ 120	5	b	0	0	5	1	1	X	X	X	CR	35	62	30	30	35	31	31	X	X	X	OD
Get OSD H-Position	5	8	0	0	4	1	2				CR	35	38	30	30	34	31	32				OD

000 ~ 100	5	b	0	0	5	1	2	X	X	X	CR	35	62	30	30	35	31	32	X	X	X	OD
Get OSD V-Position	5	8	0	0	4	1	3				CR	35	38	30	30	34	31	33				OD
000 ~ 100	5	b	0	0	5	1	3	X	X	X	CR	35	62	30	30	35	31	33	X	X	X	OD
Get Overscan	5	8	0	0	4	1	4				CR	35	38	30	30	34	31	34				OD
000: Off	5	b	0	0	5	1	4	0	0	0	CR	35	62	30	30	35	31	34	30	30	30	OD
001: On	5	b	0	0	5	1	4	0	0	1	CR	35	62	30	30	35	31	34	30	30	31	OD
Get DDC/Cl	5	8	0	0	4	1	5				CR	35	38	30	30	34	31	35				OD
000: Off	5	b	0	0	5	1	5	0	0	0	CR	35	62	30	30	35	31	35	30	30	30	OD
001: On	5	b	0	0	5	1	5	0	0	1	CR	35	62	30	30	35	31	35	30	30	31	OD
Get AutoSource	5	8	0	0	4	1	6				CR	35	38	30	30	34	31	36				OD
000: OFF	5	b	0	0	5	1	6	0	0	0	CR	35	62	30	30	35	31	36	30	30	30	OD
001: On	5	b	0	0	5	1	6	0	0	1	CR	35	62	30	30	35	31	36	30	30	31	OD

Set structure and commands:

The command structure below is used to set a data value or activate a function on a MondoPad over RS232

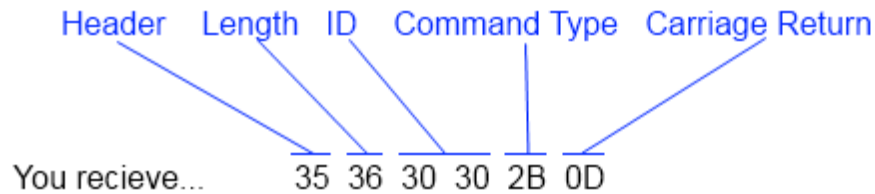
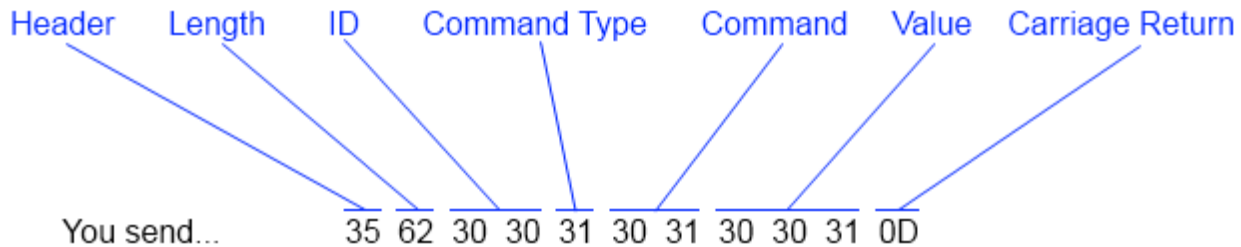
Set Command Structure

Name	Header	Length	ID 1	ID 2	Command Type	Command 1	Command 2	Value1	Value2	Value3	CR
Bytes order	1	2	3	4	5	6	7	8	9	10	11

Reply structure

Name	Header	Length	ID 1	ID 2	Command Type	CR
Bytes order	1	2	3	4	5	6

For example, say a MondoPad you want to change the source to HDMI 2:



If you send an invalid command or value, you will get the Invalid response 35 36 30 30 2B 0D.

In the table below the commands are alternated in gray/white backgrounds for easy readability.

Commands with a value of "XXX" have a range of possibilities which are listed in the Set Command Column (example, Brightness has possible values of 000 – 100 (30 30 30 – 31 30 30))

****Some commands will only work on specific configurations***

Set Command	ASCII Character											HEX										
	Header	Length	ID1	ID2	Command Type	Command 1	Command2	Value1	Value2	Value3	CR	Header	Length	ID1	ID2	Command Type	Command 1	Command2	Value1	Value2	Value3	CR
Power Off	5	b	0	0	1	0	0	0	0	0	CR	35	62	30	30	31	30	30	30	30	30	0D
Power On	5	b	0	0	1	0	0	0	0	1	CR	35	62	30	30	31	30	30	30	30	31	0D
Input - HDMI1	5	b	0	0	1	0	1	0	0	0	CR	35	62	30	30	31	30	31	30	30	30	0D
Input - HDMI2	5	b	0	0	1	0	1	0	0	1	CR	35	62	30	30	31	30	31	30	30	31	0D
Input - HDMI3	5	b	0	0	1	0	1	0	0	2	CR	35	62	30	30	31	30	31	30	30	32	0D
Input - HDMI4	5	b	0	0	1	0	1	0	0	4	CR	35	62	30	30	31	30	31	30	30	34	0D
Input - HDMI5	5	b	0	0	1	0	1	0	0	7	CR	35	62	30	30	31	30	31	30	30	37	0D
Input - Mondopad	5	b	0	0	1	0	1	0	0	9	CR	35	62	30	30	31	30	31	30	30	39	0D
Input - VGA	5	b	0	0	1	0	1	0	0	3	CR	35	62	30	30	31	30	31	30	30	33	0D
Input - YPbPr	5	b	0	0	1	0	1	0	0	6	CR	35	62	30	30	31	30	31	30	30	36	0D
Input - AV	5	b	0	0	1	0	1	0	0	8	CR	35	62	30	30	31	30	31	30	30	38	0D
Audio Input - Audio 1	5	b	0	0	1	0	2	0	0	0	CR	35	62	30	30	31	30	32	30	30	30	0D
Audio Input - Audio 2	5	b	0	0	1	0	2	0	0	1	CR	35	62	30	30	31	30	32	30	30	31	0D
Audio Input - HDMI 1	5	b	0	0	1	0	2	0	0	3	CR	35	62	30	30	31	30	32	30	30	33	0D
Audio Input - HDMI 2	5	b	0	0	1	0	2	0	0	4	CR	35	62	30	30	31	30	32	30	30	34	0D
Audio Input - HDMI 3	5	b	0	0	1	0	2	0	0	5	CR	35	62	30	30	31	30	32	30	30	35	0D
Audio Input - HDMI 4	5	b	0	0	1	0	2	0	0	7	CR	35	62	30	30	31	30	32	30	30	37	0D
Audio Input - HDMI5	5	b	0	0	1	0	2	0	0	9	CR	35	62	30	30	31	30	32	30	30	39	0D
Audio Input - Mondopad	5	b	0	0	1	0	2	0	0	6	CR	35	62	30	30	31	30	32	30	30	36	0D
Keyboard Control Disable	5	b	0	0	1	0	3	0	0	0	CR	35	62	30	30	31	30	33	30	30	30	0D
Keyboard Control Enable	5	b	0	0	1	0	3	0	0	1	CR	35	62	30	30	31	30	33	30	30	31	0D
Brightness, 000~100	5	b	0	0	1	1	0	X	X	X	CR	35	62	30	30	31	31	30	X	X	X	0D
Contrast, 000~100	5	b	0	0	1	1	1	X	X	X	CR	35	62	30	30	31	31	31	X	X	X	0D
Sharpness ,000~100	5	b	0	0	1	1	2	X	X	X	CR	35	62	30	30	31	31	32	X	X	X	0D
Color Temperature - Native	5	b	0	0	6	0	0	0	0	0	CR	35	62	30	30	36	30	30	30	30	30	0D
Color Temperature - 6500K	5	b	0	0	6	0	0	0	0	1	CR	35	62	30	30	36	30	30	30	30	31	0D
Color Temperature - 9300K	5	b	0	0	6	0	0	0	0	2	CR	35	62	30	30	36	30	30	30	30	32	0D
Color Temperature - User	5	b	0	0	6	0	0	0	0	3	CR	35	62	30	30	36	30	30	30	30	33	0D
Color Control Red, 000~100	5	b	0	0	6	0	1	X	X	X	CR	35	62	30	30	36	30	31	X	X	X	0D
Color Control Green, 000~100	5	b	0	0	6	0	2	X	X	X	CR	35	62	30	30	36	30	32	X	X	X	0D
Color Control Blue, 000~100	5	b	0	0	6	0	3	X	X	X	CR	35	62	30	30	36	30	33	X	X	X	0D
Picture Mode - Standard	5	b	0	0	6	0	4	0	0	0	CR	35	62	30	30	36	30	34	30	30	30	0D
Picture Mode - HighBright	5	b	0	0	6	0	4	0	0	1	CR	35	62	30	30	36	30	34	30	30	31	0D
Picture Mode - Soft	5	b	0	0	6	0	4	0	0	2	CR	35	62	30	30	36	30	34	30	30	32	0D
Picture Reset	5	b	0	0	6	0	5	0	0	1	CR	35	62	30	30	36	30	35	30	30	31	0D
Aspect Ratio - Wide	5	b	0	0	6	0	6	0	0	0	CR	35	62	30	30	36	30	36	30	30	30	0D
Aspect Ratio - 4:3	5	b	0	0	6	0	6	0	0	1	CR	35	62	30	30	36	30	36	30	30	31	0D
Screen Reset	5	b	0	0	6	0	7	0	0	1	CR	35	62	30	30	36	30	37	30	30	31	0D
HPosition, 000~100	5	b	0	0	6	0	8	X	X	X	CR	35	62	30	30	36	30	38	X	X	X	0D
Vposition, 000~100	5	b	0	0	6	0	9	X	X	X	CR	35	62	30	30	36	30	39	X	X	X	0D
Clock, 000~100	5	b	0	0	6	1	0	X	X	X	CR	35	62	30	30	36	31	30	X	X	X	0D
Clock Phase, 000~100	5	b	0	0	6	1	1	X	X	X	CR	35	62	30	30	36	31	31	X	X	X	0D

Screen Freeze - ON	5	b	0	0	6	5	0	0	0	1	CR	35	62	30	30	36	35	30	30	30	31	0D
Screen Freeze - OFF	5	b	0	0	6	5	0	0	0	0	CR	35	62	30	30	36	35	30	30	30	30	0D
Blank - ON	5	b	0	0	6	6	0	0	0	1	CR	35	62	30	30	36	36	30	30	30	31	0D
Blank - OFF	5	b	0	0	6	6	0	0	0	0	CR	35	62	30	30	36	36	30	30	30	30	0D
Dimming - 10%	5	b	0	0	6	7	0	0	0	0	CR	35	62	30	30	36	37	30	30	30	30	0D
Dimming - 30%	5	b	0	0	6	7	0	0	0	1	CR	35	62	30	30	36	37	30	30	30	31	0D
Dimming - 70%	5	b	0	0	6	7	0	0	1	0	CR	35	62	30	30	36	37	30	30	31	30	0D
Dimming - 100%	5	b	0	0	6	7	0	0	1	1	CR	35	62	30	30	36	37	30	30	31	31	0D
Gamma - Native	5	b	0	0	1	1	c	0	0	0	CR	35	62	30	30	31	31	63	30	30	30	0D
Gamma - 2.2	5	b	0	0	1	1	c	0	0	1	CR	35	62	30	30	31	31	63	30	30	31	0D
Gamma - 2.4	5	b	0	0	1	1	c	0	0	2	CR	35	62	30	30	31	31	63	30	30	32	0D
Volume, 000~100	5	b	0	0	1	5	0	X	X	X	CR	35	62	30	30	31	35	30	X	X	X	0D
Volume +1	5	b	0	0	6	1	2	0	0	0	CR	35	62	30	30	36	31	32	30	30	30	0D
Volume -1	5	b	0	0	6	1	3	0	0	0	CR	35	62	30	30	36	31	33	30	30	30	0D
Speaker Internal	5	b	0	0	1	5	4	0	0	0	CR	35	62	30	30	31	35	34	30	30	30	0D
Speaker External	5	b	0	0	1	5	4	0	0	1	CR	35	62	30	30	31	35	34	30	30	31	0D
Audio Reset	5	b	0	0	6	1	4	0	0	1	CR	35	62	30	30	36	31	34	30	30	31	0D
Mute Off	5	b	0	0	1	5	5	0	0	0	CR	35	62	30	30	31	35	35	30	30	30	0D
Mute On	5	b	0	0	1	5	5	0	0	1	CR	35	62	30	30	31	35	35	30	30	31	0D
Language - English	5	b	0	0	6	1	8	0	0	0	CR	35	62	30	30	36	31	38	30	30	30	0D
Language - Chinese	5	b	0	0	6	1	8	0	0	1	CR	35	62	30	30	36	31	38	30	30	31	0D
Configuration Reset	5	b	0	0	6	1	9	0	0	1	CR	35	62	30	30	36	31	39	30	30	31	0D
Factory Reset	5	b	0	0	6	2	0	0	0	1	CR	35	62	30	30	36	32	30	30	30	31	0D
USB Hub - Auto	5	b	0	0	6	4	0	0	0	0	CR	35	62	30	30	36	34	30	30	30	30	0D
USB Hub - Mondopad	5	b	0	0	6	4	0	0	0	1	CR	35	62	30	30	36	34	30	30	30	31	0D
USB Hub - External	5	b	0	0	6	4	0	0	0	2	CR	35	62	30	30	36	34	30	30	30	32	0D
OSD turn off, 005-120,5	5	b	0	0	6	2	2	X	X	X	CR	35	62	30	30	36	32	32	X	X	X	0D
OSD H-Position, 000~100	5	b	0	0	6	2	3	X	X	X	CR	35	62	30	30	36	32	33	X	X	X	0D
OSD V-Position, 000~100	5	b	0	0	6	2	4	X	X	X	CR	35	62	30	30	36	32	34	X	X	X	0D
Overscan - OFF	5	b	0	0	6	2	6	0	0	0	CR	35	62	30	30	36	32	36	30	30	30	0D
Overscan - ON	5	b	0	0	6	2	6	0	0	1	CR	35	62	30	30	36	32	36	30	30	31	0D
DDC/DDI - OFF	5	b	0	0	6	2	7	0	0	0	CR	35	62	30	30	36	32	37	30	30	30	0D
DDC/DDI - ON	5	b	0	0	6	2	7	0	0	1	CR	35	62	30	30	36	32	37	30	30	31	0D
Advanced Option Reset	5	b	0	0	6	2	8	0	0	1	CR	35	62	30	30	36	32	38	30	30	31	0D
Autosource OFF	5	b	0	0	6	2	9	0	0	0	CR	35	62	30	30	36	32	39	30	30	30	0D
Autosource ON	5	b	0	0	6	2	9	0	0	1	CR	35	62	30	30	36	32	39	30	30	31	0D