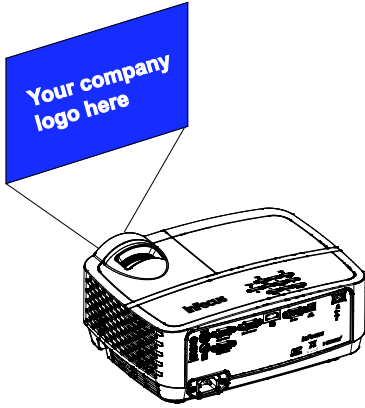


# SPLASHX

---

Use these instructions to load a custom image onto your SplashX compatible projector, such as your company or school logo. The custom image can be used as a search screen or blank screen image.



## Required equipment

- USB-A to USB-B cable
- Windows® computer
- SplashX-compatible projector
- Power cord

## Source image specifications

### Supported formats

BMP (≤24 bit color depth), JPEG, or PNG.

### Image resolution

The source image should be the same size as the target projector.

## SplashX compatibility

Windows XP, Vista, 7, 8, 10

### To determine your projector's

**resolution:** Select the Advanced Menu > Status/Service > Projector Info submenu in the projector OSD menu and review **Native Resolution**.

## Before you begin

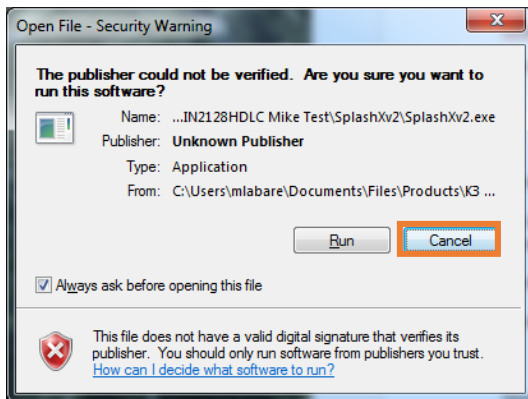
Use these instructions to turn off Power Saving Mode in your projector.

**IN1116/IN1118HD note:** You cannot turn off Power Saving Mode on the IN1116 and IN1118HD projectors. If you have an IN1116 or IN1118HD projector, please proceed to the next section.

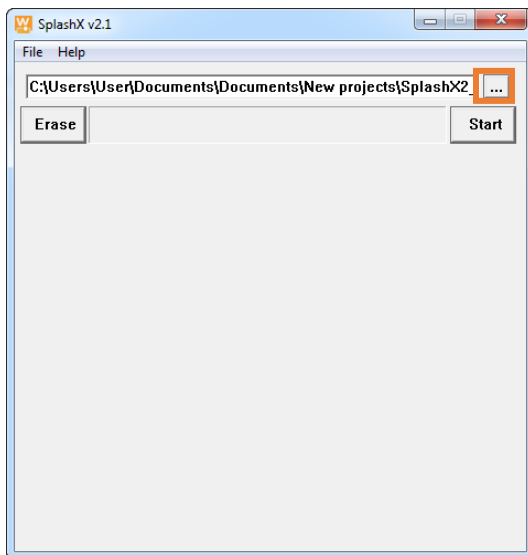
1. Turn on the projector.
2. Press the **Menu** button on the remote or projector keypad.
3. Navigate to the **Advanced Menu > Setup > Power** submenu.
4. Change the Power Saving Mode to **Off**.
5. Turn the projector off.

## Setup and installation

1. Connect your projector to the computer using a USB cable (either a USB-A to USB-B or USB-A to USB Micro-B depending on your projector).
2. Connect a power cord to your projector.
3. If you have an IN1116 or IN1118HD projector, turn on the projector. Otherwise do not turn on your projector.
4. Download the **SplashX.exe** application from [www.infocus.com/support](http://www.infocus.com/support) and save it to your computer.
5. Unzip the **SplashX** file.
6. Double-click the **SplashX** executable file (.exe).
7. If you see a Windows security warning, click **Run**.

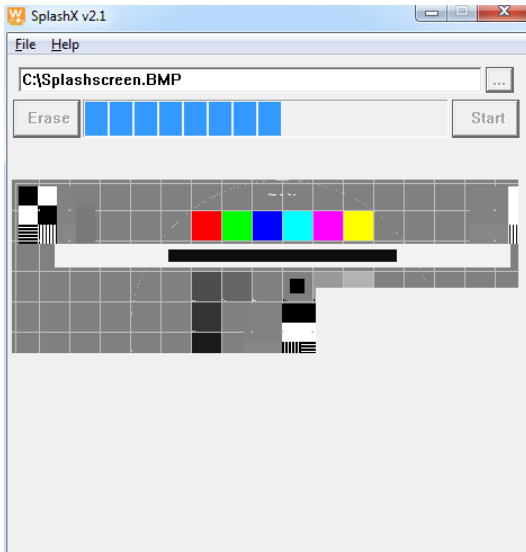


8. Click the **Browse (...)** button and navigate to the image you wish to upload.

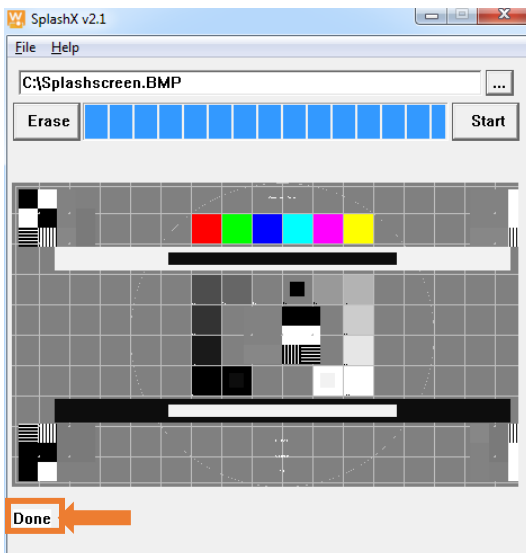


9. Click **Start** and wait patiently. Your image will begin to display in the SplashX window.

**Note:** If this is the first time you have used SplashX, it will take several minutes for your image to load.



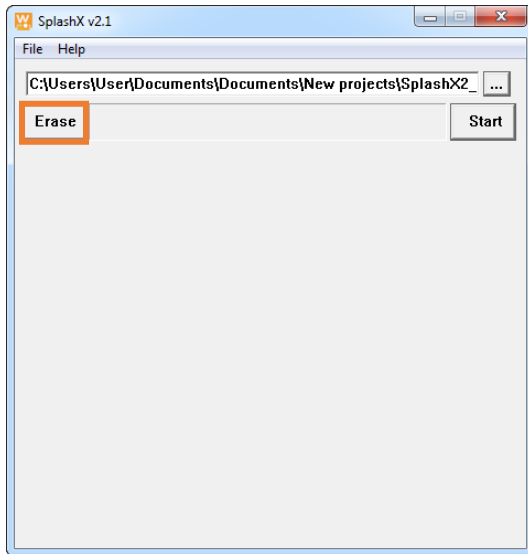
10. When the process is complete, the image will be fully displayed in the SplashX window and the message “Done” will appear in the lower left of the screen. Your custom image is now the default Search Screen image.



11. To assign your custom image as the projector’s Blank Screen:
- Turn on the projector and click the **Menu** button on the projector keypad.
  - Navigate to the Advanced Menu > Setup > Keypad/Remote submenu.
  - Navigate to **Blank Key** and select **User**.

## Erasing the custom image

1. Follow the **Setup and installation** instructions above, but click **Erase** when the SplashX window appears.



2. Turn off the projector and disconnect it from power.
3. Reconnect the power cord and turn on the projector.
4. Your custom image is now deleted from the projector.

## Troubleshooting

If the message “No found projector” appears:

1. Verify that your image is the same size as the projector resolution and is either a BMP (<24 bit color depth), JPEG, or PNG
2. Verify that your projector is SplashX compatible and that your computer uses a compatible Windows operating system.
3. Click **Start** again. Wait several minutes.
4. If you continue to experience issues, contact InFocus Support at [www.infocus.com/support](http://www.infocus.com/support).